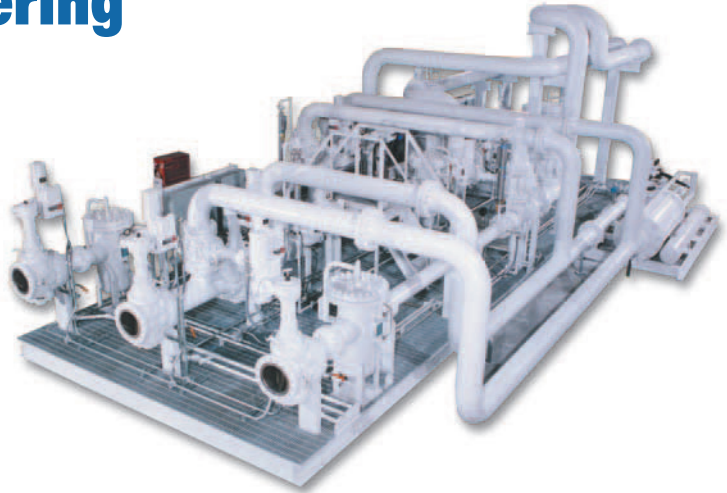




Custody Transfer Metering System

Integrated Flow Solutions Custody Transfer Metering System is designed for accurate measurement and sampling of various hydrocarbon liquids ranging in viscosity from 2 to 5,000 centistokes. The complete system includes inlet basket strainers, air eliminators, positive displacement or turbine flow meters, back pressure control valve, suction/discharge piping, valving, instrumentation, controls and is designed to minimize field assembly.



Industries



POWER



OIL & GAS

Benefits

- Single Source Accountability
- Pre-Packaged Modular Design Costs Less Than Component Based Site-Built Systems Reducing Overall Project Cost
- Minimizes Field Erection Time - Shorter Overall Project Delivery Schedule
- Complete System Function Testing Prior To Shipment
- 24/7 Customer Service

Industry Standards

- Vessels Code Stamped ASME Section VIII & National Board Registered
- Piping Designed to ANSI B31.1/ANSI B31.3
- Pipe Fabrication to ASME Section IX
- Structural Steel Assembly Designed to AWS D1.1

Standard Features

- PLC Control System with Flow Computer
- Basket Strainer with PDI
- Air Eliminator
- Back Pressure Valve
- Thermal Relief Valve
- Turbine or Positive Displacement Flowmeter
- Pressure Indicator & Transmitter
- Double Block & Breed

Standard Features (Continued)

- Prover Connections
- Hydrotesting of All Piping
- High Quality Industrial Coating System

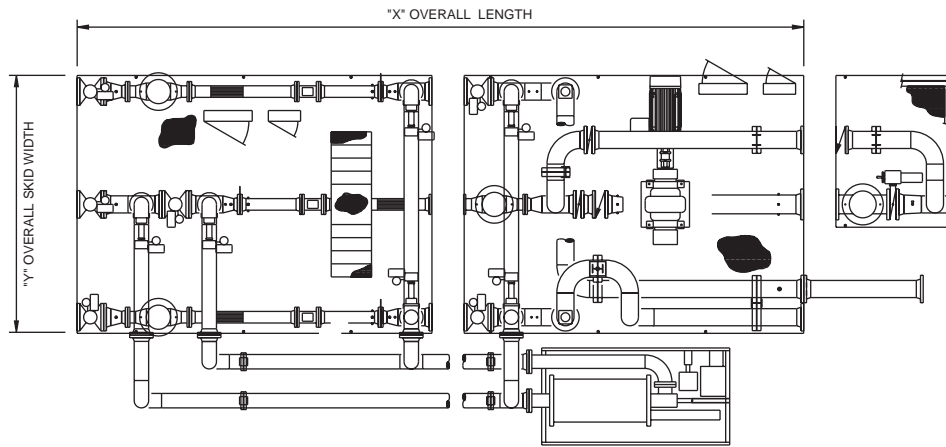
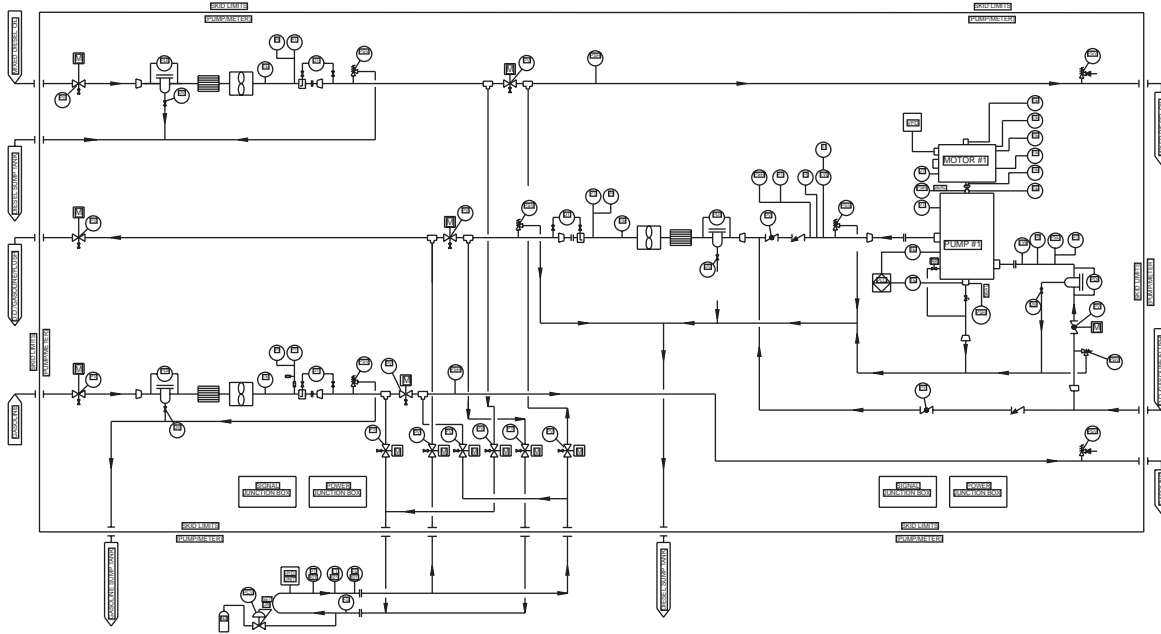
Optional Features

- Rigid Structural Steel Base with Curbed Perimeter & Drain to Minimize Environmental Impact
- Differential Pressure Switch on Strainer
- Static Mixer
- BS&W Monitor
- Densitometer
- Diverter Valve
- Meter Prover (Bi-Directional)
- Charge Pump
- Sampling System
- All NEMA or IEC Rated Enclosures and Components for Class 1, Div. 1 or Div. 2 Electrical Areas
- Panel View Operator Interface
- Microprocessor Controller with INTEGRAFLOW™ Control Software to Monitor Critical Functions & Provide Complete System Control
- Complete String Test of Package

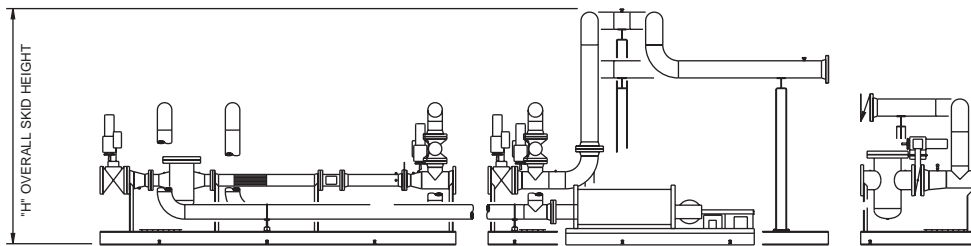
Additional Services

- Nationwide Service Network
- Utility System Optimization Studies
- Turn-Key Projects
- Equipment Leasing Program
- Extended Equipment Warranties

Custody Transfer Metering System



PLAN VIEW



ELEVATION VIEW

| FLOW (BPD) | LENGTH - X | WIDTH - Y | HEIGHT - Z | WEIGHT - LBS. |
|------------|------------|-----------|------------|---------------|
| 2,000 | 10' | 11' | 14' | 15,000 |
| 10,000 | 20' | 11' | 14' | 25,000 |
| 50,000 | 40' | 12' | 14' | 50,000 |
| 100,000 | 45' | 14' | 14' | 60,000 |
| 150,000 | 60' | 16' | 14' | 75,000 |