



High Pressure Packaged Pump System

Integrated Flow Solutions High Pressure Packaged Pump Systems are designed to pump various higher viscosity hydrocarbons (<10 centistokes) to high discharge pressures. The complete system includes screw pump(s), electric motor(s), suction/discharge piping, valving, instrumentation, controls and is designed to minimize field assembly.



Industries



POWER



OIL & GAS



GENERAL

Benefits

- Single Source Accountability
- Pre-Packaged Modular Design Costs Less Than Component Based Site-Built Systems Reducing Overall Project Cost
- Minimizes Field Erection Time - Shorter Overall Project Delivery Schedule
- Complete System Function Testing Prior To Shipment
- 24/7 Customer Service

Industry Standards

- Vessels Code Stamped ASME Section VIII & National Board Registered
- Piping Designed to ANSI B31.1/ANSI B31.3
- Pipe Fabrication to ASME Section IX
- Structural Steel Assembly Designed to AWS D1.1

Standard Features

- API 676 Horizontal Double or Triple Screw Pumps
- Pump Casing Materials from Cast Iron to Carbon Steel
- WP-II, TEFC, TEAAC or XP Electric Motor Enclosure
- Motor Voltage - 460 Volt or 2300/4160 Volt
- Full Pump/Motor Instrumentation Including Vibration, Temperature, Flow & Pressure Monitoring

Standard Features (Continued)

- Duplex Pump Configuration Providing 100% Stand-By
- Rigid Structural Steel Base with Curbed Perimeter & Drain to Minimize Environmental Impact
- Hydrotesting of All Piping
- High Quality Industrial Coating System

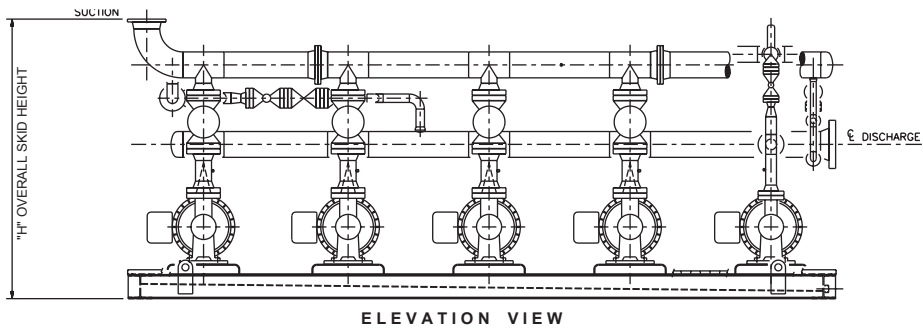
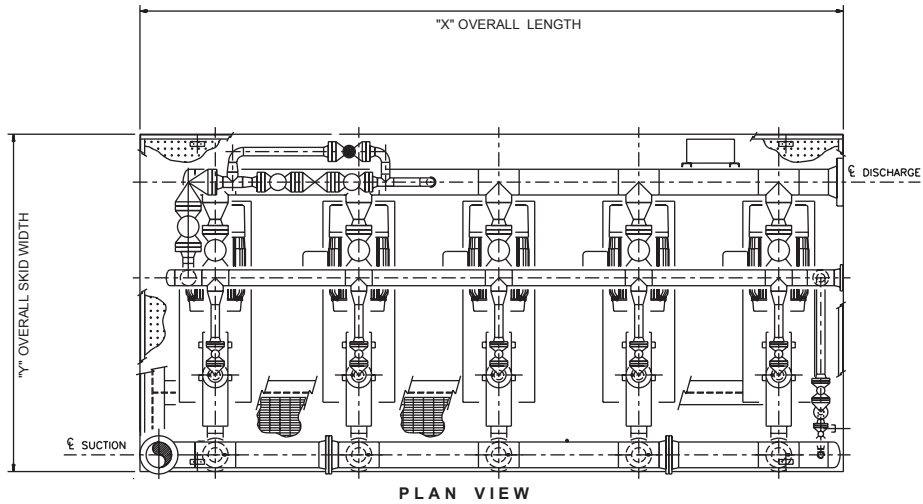
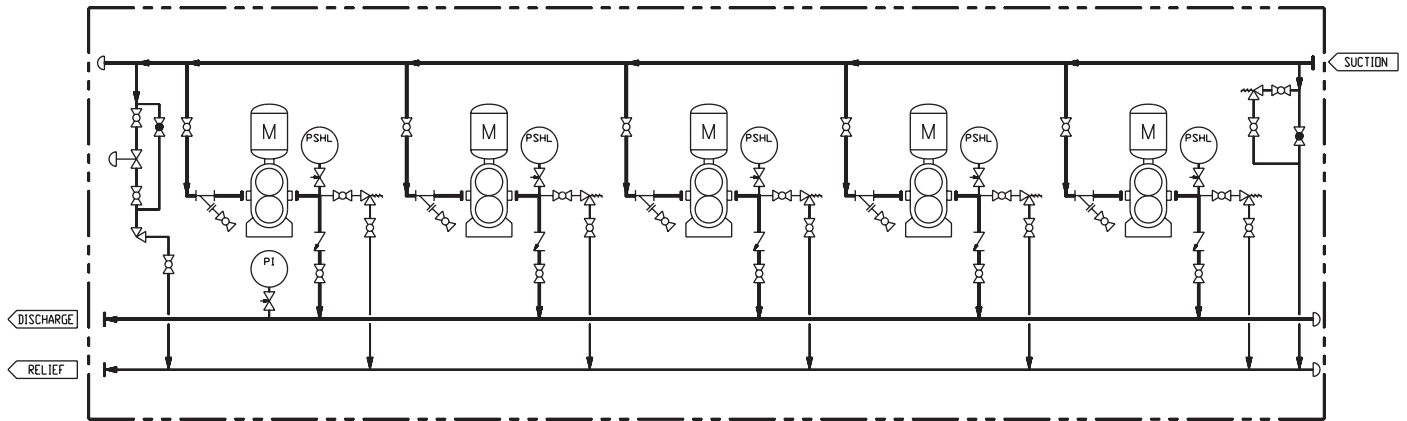
Optional Features

- All NEMA or IEC Rated Enclosures and Components for Class 1, Div. 1 or Div. 2 Electrical Areas
- Panelview Operator Interface
- Microprocessor Controller with INTEGRAFLOW™ Control Software to Monitor Critical Functions & Provide Complete System Control
- Complete String Test of Package
- Simplex & Triplex Pump Configurations

Additional Services

- Nationwide Service Network
- Installation & Supervision
- Turn-Key Projects
- Equipment Leasing Program
- Extended Equipment Warranties

High Pressure Packaged Pump System



TOTAL FLOW (GPM)	PRESSURE (PSI)	LENGTH - X	WIDTH - Y	HEIGHT - Z	WEIGHT (LBS.)
100	1,000	20'	12'	14'	25,000
250	1,000	22'	14'	14'	37,000
500	1,000	26'	16'	14'	48,000
1,000	1,500	32'	20'	14'	61,000
2,000	2,000	48'	25'	16'	75,000