



# Integrated Flow Solutions

## Capabilities Presentation 2016



*Global Industrial Process Engineering Company*  
Since 1979



# OVERVIEW



## Global Process Engineering Company

Specialists in Modular, Engineered-to-Order, Liquid & Gas Process Packages & Systems

- IFS plug & play process units are shipped skid-mounted and ready to plug-in at customer sites worldwide, no matter how extreme, remote and challenging the location.

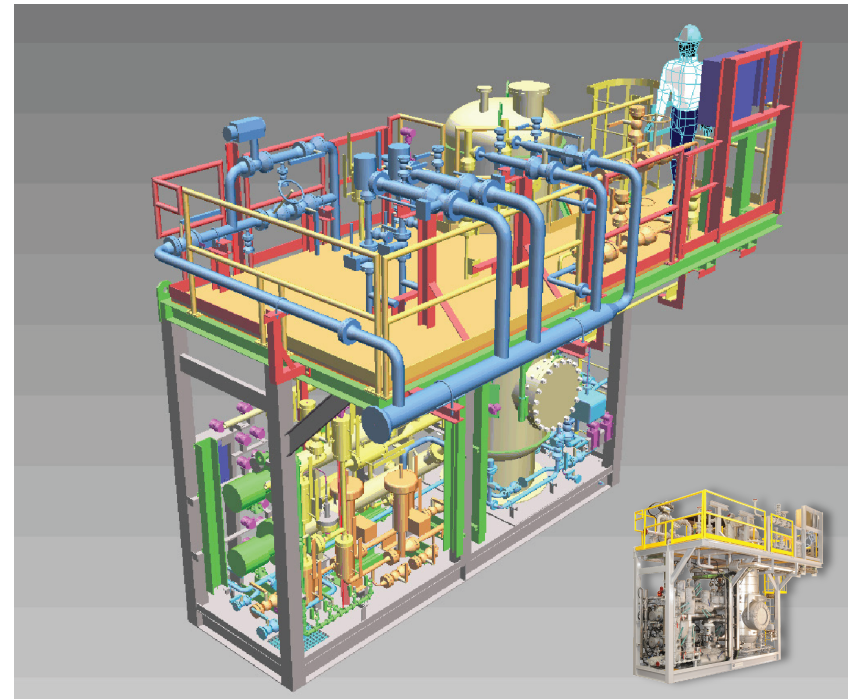
## Serving the Industrial Process Market

Oil & Gas: Upstream – Midstream – Downstream

Power Generation

LNG

Air Quality



*Skid-mounted Offshore Production Gas Treatment Package Shipped Ready to Plug-In to Trinidad*

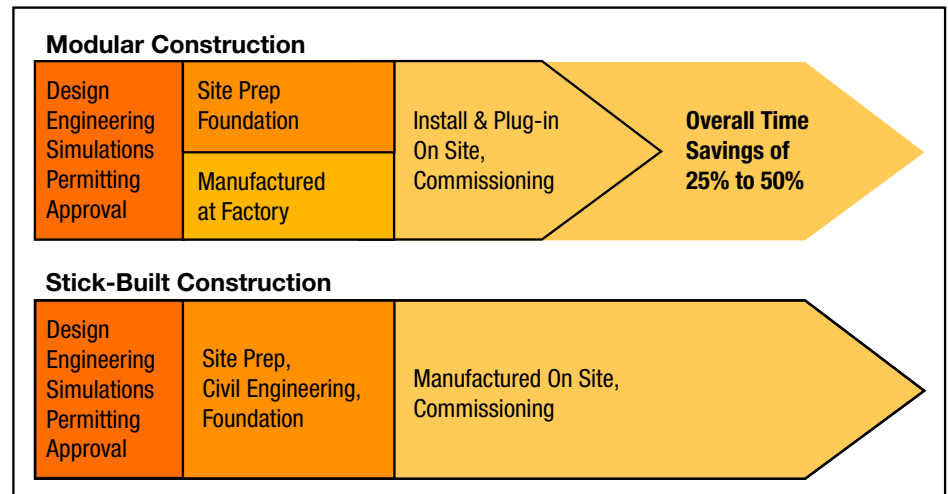


**Skid-Mounted - Modular - Engineered-to-Order – Ready to “Plug-In” Packages**



## Modular Vs Stick Built

Modular	Stick Built
High Quality	Variable Quality
Firm Price	Cost Overrun Risks
Firm Delivery	Weather Delays
Time Savings	More Site Prep Time
Skilled Factory Workers	Available Local Workers
Single Source Responsibility	Multiple Vendors
Single Delivery Anywhere	Multiple Shipments
Minimum Site Activity	Increased Site Activity
Lower Safety Risk	Higher Safety Risk
Thorough Documentation	Unsure Documentation
Reliable Aftersales Services	Unsure Aftersales Support

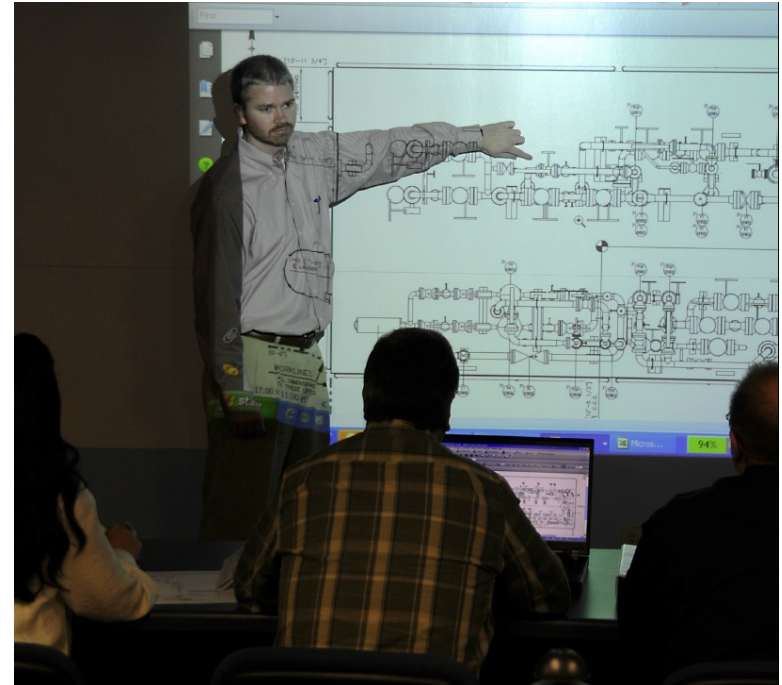


*Minimum Site Disruption, Environmental Impact and Safety Risk with Modular Construction*



## Design & Engineering Team

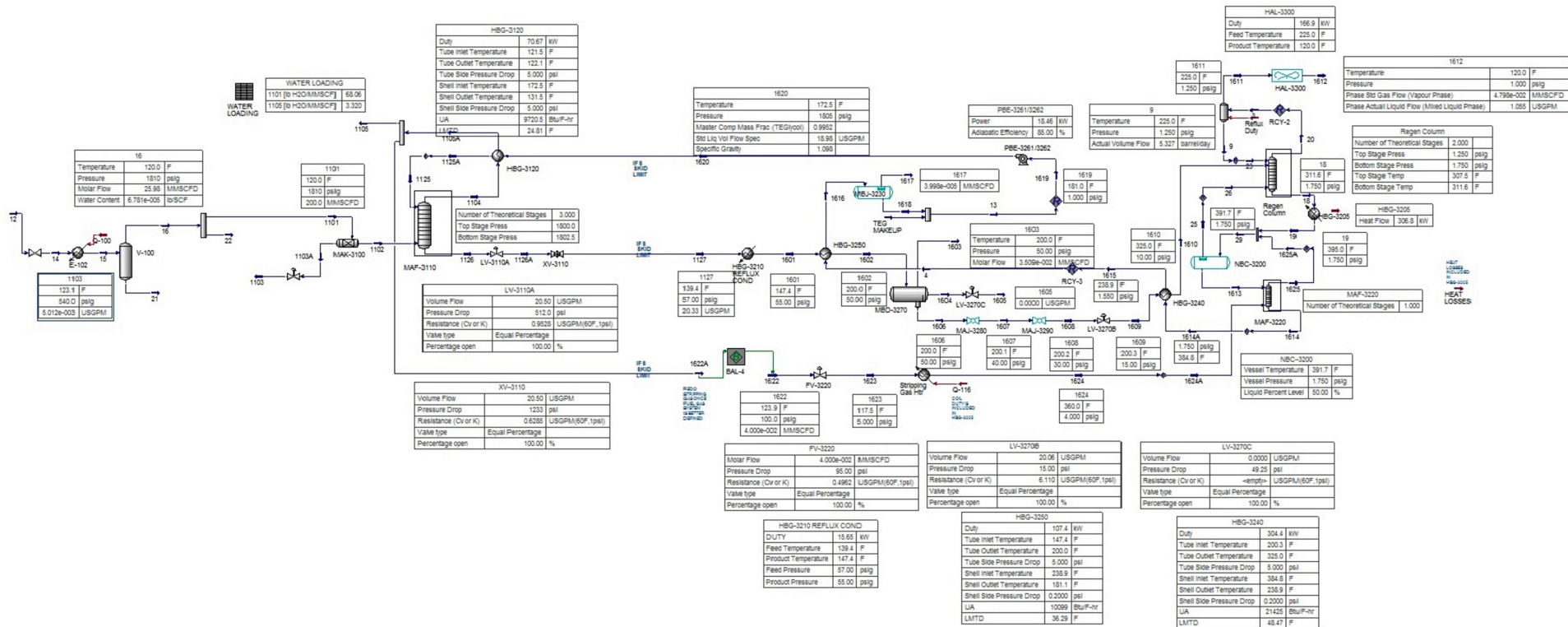
- **Sales Group** - Single point of contact for customers, comprised entirely of Experienced Engineers
- **Project Management**
- **Mechanical Engineering**
- **Electrical/I&E Engineering**
- **Process Engineering** – Process Testing & Validation
- **Design** – 10, 3-D AutoCAD 2010 stations.





## Process Engineering Tools

### Process Validation with Aspen HYSYS Process Version 8.8 Static & Dynamic Simulations



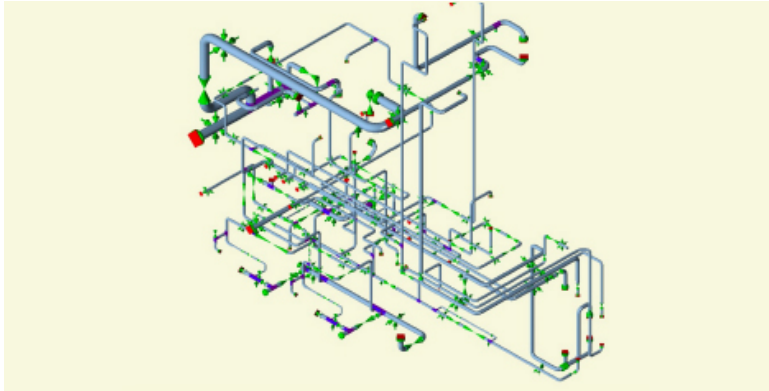
Dynamic Process Simulation to Make Sure the Design will Work and is Optimized



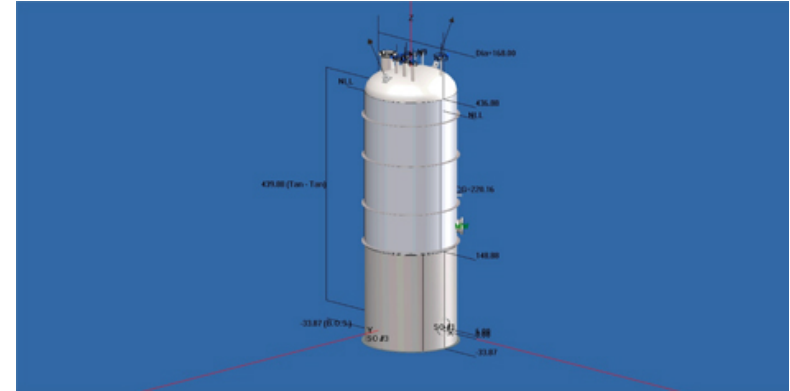
# CAPABILITIES



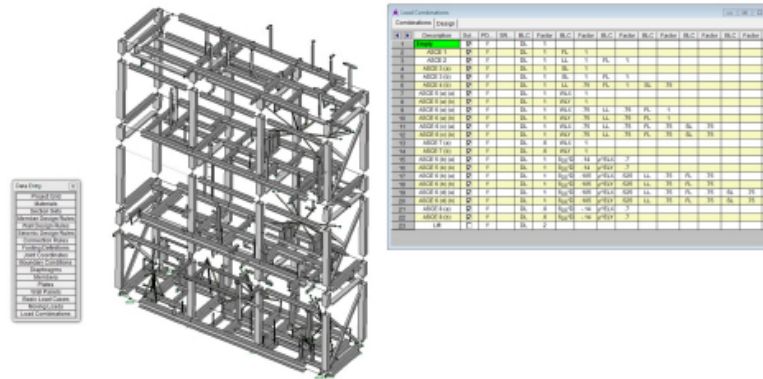
## Mechanical/Electrical Design Tools



CEASAR II – Pipe Stress Analysis Software



COMPRESS for ASME 2015 Vessel Calculations



RISA 3D for Structural Analysis



Skid-Mounted - Modular - Engineered-to-Order – Ready to “Plug-In” Packages

# CAPABILITIES



## Fabrication/Manufacturing

### Tyler, TX Facility

- 125,000 ft<sup>2</sup> under roof on 7 acres
- 100 Full Time Employees
- 18 Overhead Cranes up to 26-ft Hook Height

1. Blast Facilities (Environment Controlled)
2. Paint Facilities (Environment Controlled)
3. Radiography Bunker
4. Heavy Assembly Bay with (2) 25-ton Cranes
5. ASME Pipe and Vessel Fabrication Bay
6. Segregated Project Warehousing
7. Testing & Process Verification



Skid-Mounted - Modular - Engineered-to-Order – Ready to “Plug-In” Packages



# CAPABILITIES



## Fabrication/Manufacturing

### Certifications



### IFS Maintains Most Industry Certifications

- ASME Code Stamp Certificates U & S
- National Board of Boiler & Pressure Vessels Inspectors (NB) & (R)
- Canadian Welding Bureau (CWB)
- CSA Certificate of Compliance
- UL Panel Shop Certificate
- IEC Control Panel Certification
- CE/ATEX Declaration of Conformity
- Pressure Equipment Directive (PED) Certificate of Conformity
- ATEX Electrical Construction
- GOST-R Certificate of Conformity (Sakhalin-1 Project Russia)
- ISO 9001:2008



Skid-Mounted - Modular - Engineered-to-Order – Ready to “Plug-In” Packages





## CAPABILITIES



### Fabrication/Manufacturing

#### Local Content/International Subcontracting

- To meet local content laws outside the USA, IFS will work with foreign (local) qualified contractors for fabrication and assembly.
- This is an ideal solution for countries which require a certain percentage of local content in the overall project scope.

**Engineered to Order by IFS > Fabricated in KSA**

**IFS** Sales Office in Dubai



**Skid-Mounted - Modular - Engineered-to-Order – Ready to “Plug-In” Packages**

## CAPABILITIES



### Quality Processes

**Project Scheduling** – All customer projects are loaded & tracked in the Master Schedule

**Vendor Data** – Document control department, Prolog Converge document & tracking

**Quality Control/ Quality Assurance** – Maxtrax pipe tracking software.

**ISO 9001:2008 Certified** – Audit By Bureau Veritas in 2010

**Business System** – Syteline 9 ERP

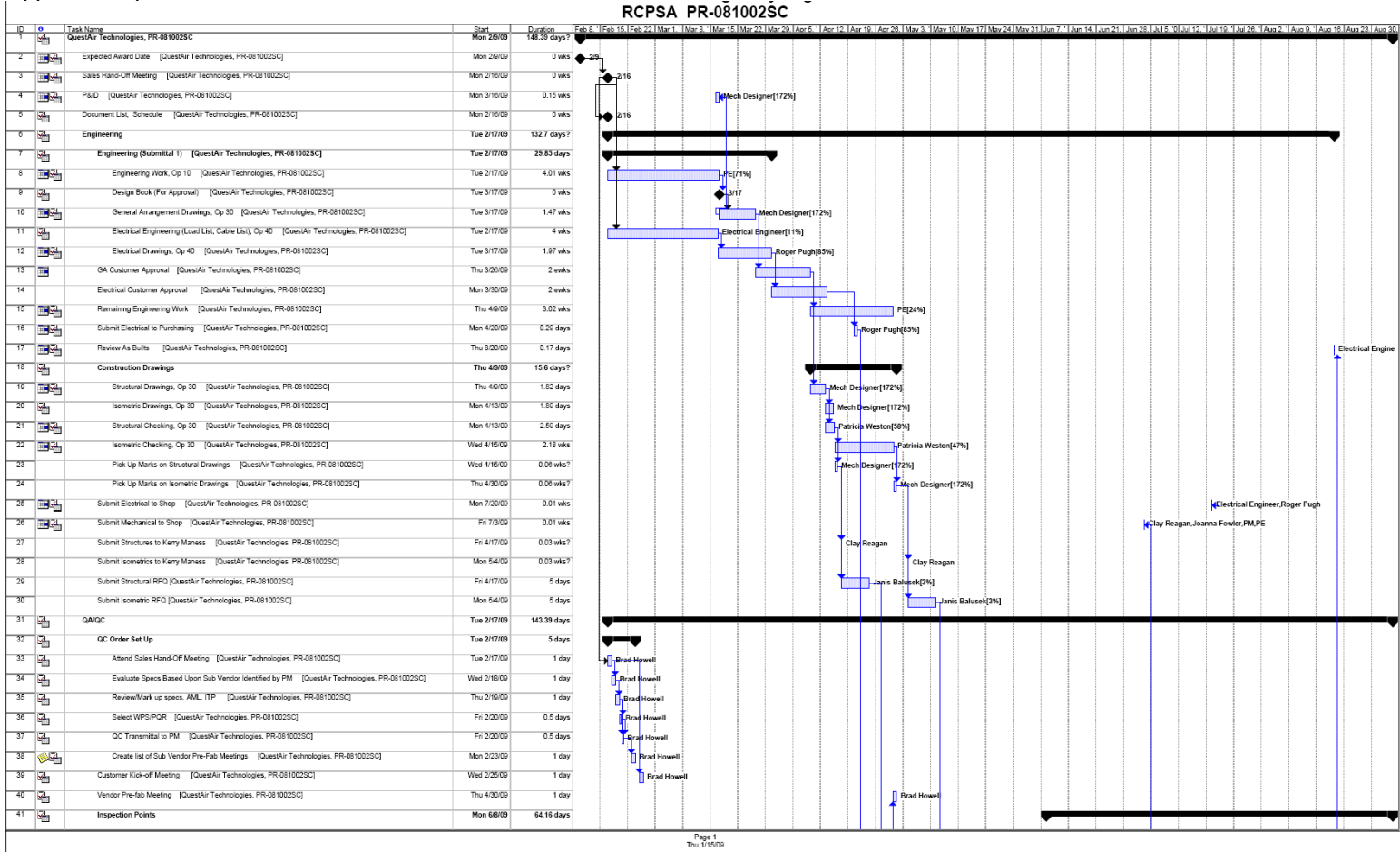




## Quality Processes

### Master Schedule

Typical Project Schedule Includes Over 100 Scheduled Events with Vendor Performance Included



## CAPABILITIES



**Delivery & Aftermarket**  
*On Land or Offshore, Globally*

**Project Cargo Management** - Ex Works Rule or Delivered Duty Paid (DDP) Rules

# Oil & Gas Project Cargo Management

Included with Every Skid-Mounted Package Built

Example: DDP from Tyler, Texas, to Remote Jungle Location in Ecuador



**Skid-Mounted - Modular - Engineered-to-Order – Ready to “Plug-In” Packages**



## CAPABILITIES



**Delivery & Aftermarket**  
*On Land or Offshore, Globally*

**On-site Services** – Training, Commissioning & Start-up



IFS Trainers have  
**Extreme**  
Experience.



**Skid-Mounted - Modular - Engineered-to-Order – Ready to “Plug-In” Packages**

## CAPABILITIES



### Delivery & Aftermarket *On Land or Offshore, Globally*

**Aftermarket Support** – Parts, Service & Warranty

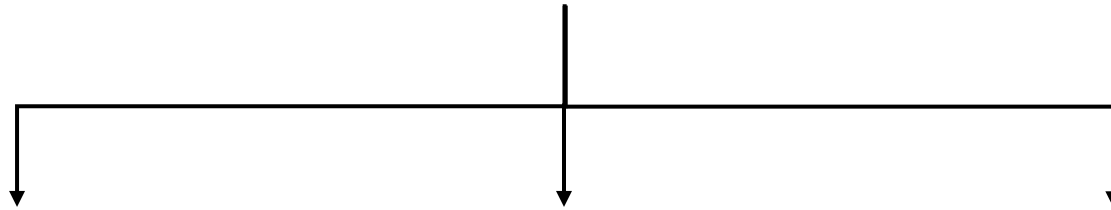


**Skid-Mounted - Modular - Engineered-to-Order – Ready to “Plug-In” Packages**



### Three Operating Divisions

#### DXP Enterprises



#### Integrated Flow Solutions



INTEGRATED FLOW SOLUTIONS

- Fuel Gas Conditioning Pkg
- Hot Oil Package
- Desanding Package
- Glycol Regeneration Pkg

Engineered to Order

#### Pump Works Industrial



- ANSI B73.1 Pumps
- Self Priming Pumps
- Pump Repair
- Pump Service

Mfg & Tested in the USA

#### Pump Works 610



- API 610 Pumps
- Pump Repair
- Pump Service
- Quick Delivery

Mfg & Tested in the USA





### **USA HEADQUARTERS**

#### **Sales Office**

9807 Whithorn Drive  
Houston, TX 77095  
Phone: 281-855-8125  
Toll Free USA: 800-795-4068

[www.IFSolutions.com](http://www.IFSolutions.com)

[Contact Form](#)

Email: [sales@ifsolutions.com](mailto:sales@ifsolutions.com)

---

### **INTERNATIONAL OFFICES DUBAI**

#### **Sales Office**

Dubai, UAE  
Tel. No.: +971 4 551 5920  
Fax No.: +971 4 551 5923

### **NIGERIA**

#### **Sales, Engineering & Fabrication**

**Integrated Flow Solutions West Africa Limited**  
**Port Harcourt, Rivers State, Nigeria**  
Tel. No.: 832-293-1314 (Houston, TX)

