

Automation and Controls

Integrated Flow Solutions Automation and Control systems are designed to monitor and control the packaged equipment. The controls can be skid mounted and prewired or remote mounted in an unclassified electrical area. Optionally, the control system can interface with the customer's plant control system. A typical control system includes a NEMA enclosure, power distribution components, control power components, programmable controller and on-skid wiring in conduit.



Industries



POWER OIL & GAS GENERAL EMISSIONS

Benefits

- Single Source Accountability
- Pre-Packaged Modular Design Costs Less Than Component Based Site-Built Which Reduces Overall Project Cost
- Mimimizes Field Erection Time -- Shorter Overall Project Delivery Schedule
- Complete System Function Testing Prior to Shipment
- 24/7 Customer Service

Industry Standards

- NEC
- IEC
- UL 508 A
- NEMA

Standard Features

- NEMA 4 Enclosures
- Flange Mounted Disconnect

Standard Features (Continued)

- Main Circuit Breaker
- Control Power Transformer
- Branched Circuit Protection Up to 200 KAIC
- Fused Contactor Protection
- 2-Line Text Display
- Finger Safe Enclosure
- Laser Impregnated Heat Shrink Label

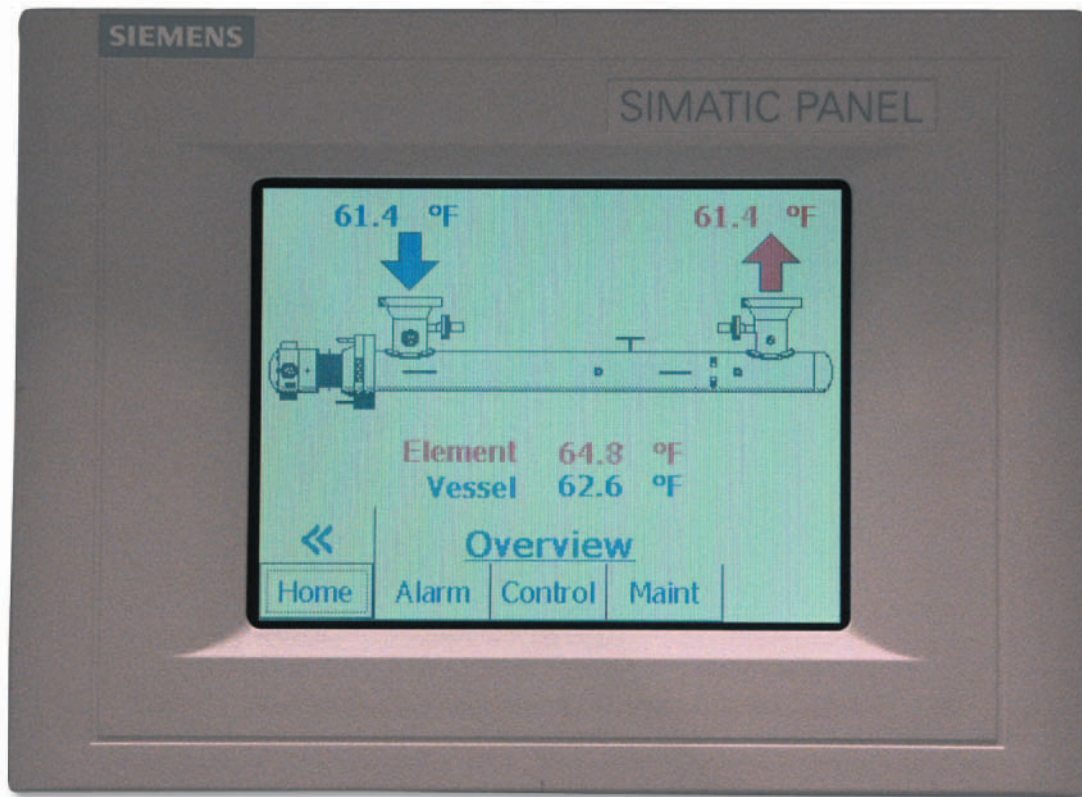
Optional Features

- NEMA 4X & 7
- Class 1, Div. 2, Groups A, B, C, D
- Class 1, Div. 1
- Z-Purge
- X-Purge
- Main Circuit Breaker with 65 KAIC
- Modbus, Data Highway Plus (AB), PROFIBUS, etc. Protocols
- Color Touch Screen Operator Interface

Additional Services

- Witnessed/Non-Witnessed Performance Testing
- Installation/Training/Start-Up Supervision
- Extended Warranty

Automation and Controls



Typical IFS touch screen display with **IntegraHeat™** Electric Process Heater under full shop testing.



Skid mounted and pre-wired control panel.



Downloading pre-tested programs into the PLC for complete package testing.