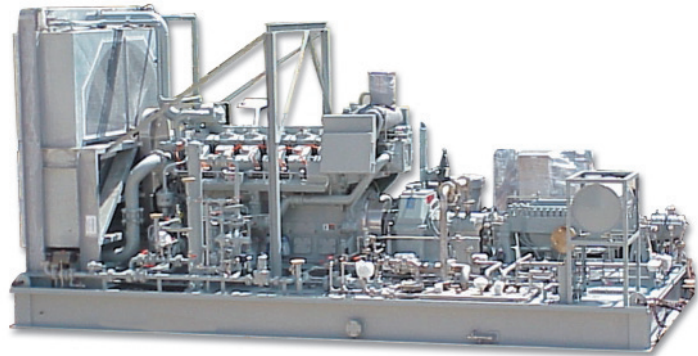


## Engine Driven Pumping System

Integrated Flow Solutions Engine Driven Pumping Systems are designed to transfer various industrial liquids (water, hydrocarbon, chemicals, etc.) from one location to another. The system consists of a diesel or natural gas fueled engine, gear increaser/reducer, pump and controls. The controls systems range from a standard annunciator panel to complete PLC control system.



### Industries



POWER



OIL & GAS



GENERAL

### Benefits

- Single Source Accountability
- Pre-Packaged Modular Design Costs Less Than Component Based Site-Built Systems Reducing Overall Project Cost
- Minimizes Field Erection Time - Shorter Overall Project Delivery Schedule
- Complete System Function Testing Prior To Shipment
- 24/7 Customer Service

### Industry Standards

- Vessels Code Stamped ASME Section VIII & National Board Registered
- Piping Designed to ANSI B31.1/ANSI B31.3
- Pipe Fabrication to ASME Section IX
- Structural Steel Assembly Designed to AWS D1.1

### Standard Features

- Pump Configurations to Meet Various Hydraulic Requirements:
  - Centrifugal Single Stage or Multistage
  - Positive Displacement Plunger or Screw
- Diesel or Natural Gas Engine Drivers
- Parallel Shaft Single/Double Reduction or Increaser Gearboxes

### Standard Features (Continued)

- Rigid Structural Steel Base with Curbed Perimeter & Drain to Minimize Environmental Impact
- Annunciator Panel to Monitor Critical Engine/ Pump/Gearbox Functions
- Hydrotesting of All Piping
- High Quality Industrial Coating System

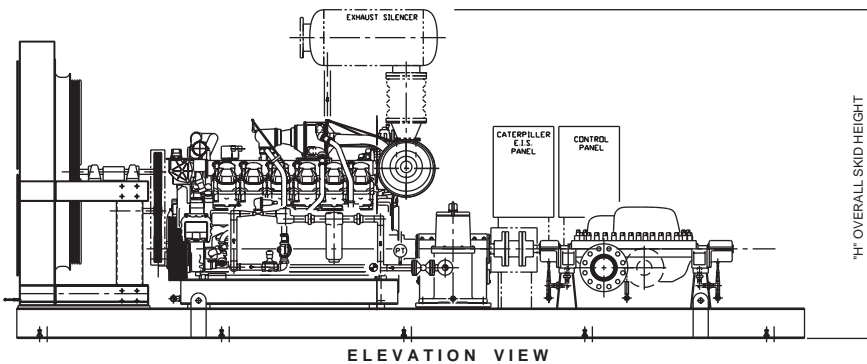
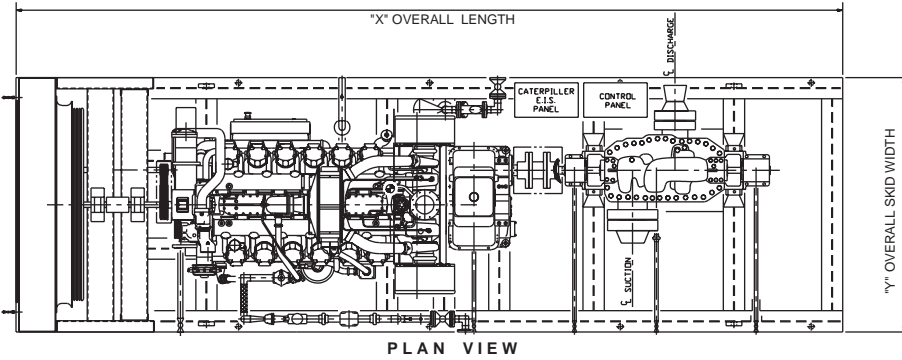
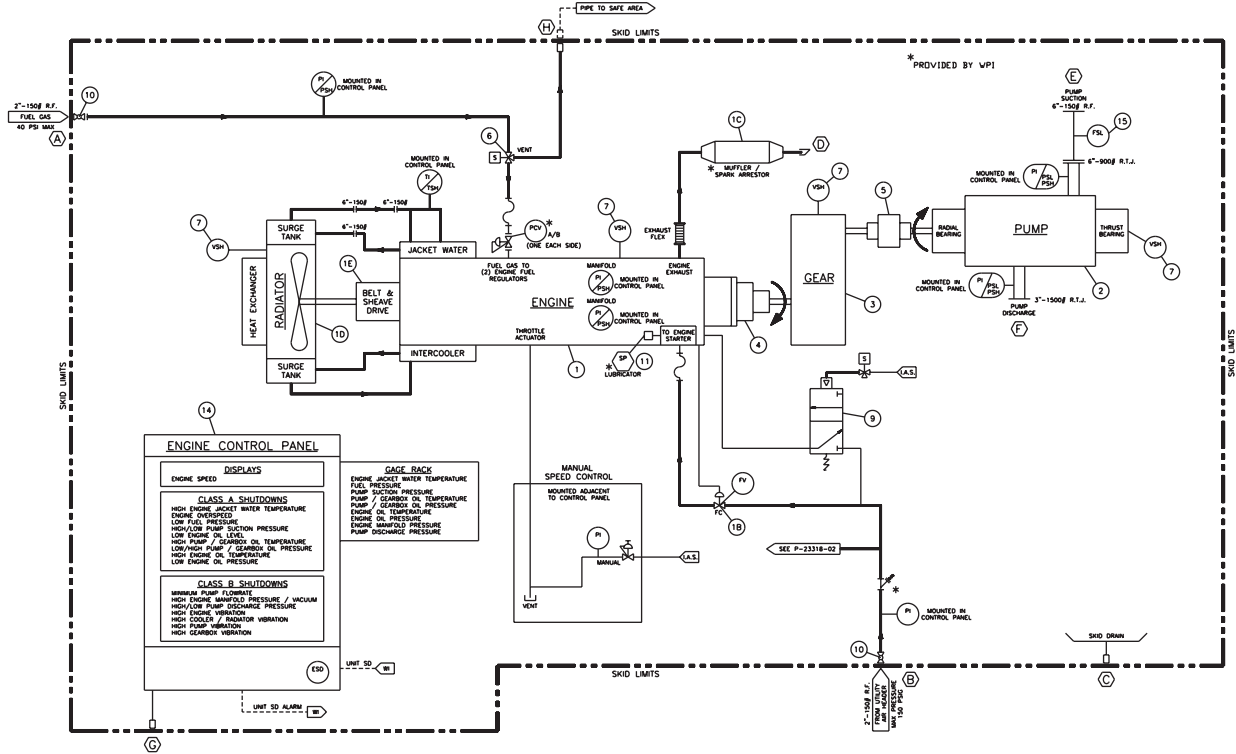
### Optional Features

- All NEMA or IEC Rated Enclosures and Components for Class 1, Div. 1 or Div. 2 Electrical Areas
- Panelview Operator Interface
- Microprocessor Controller with INTEGRAFLOW™ Control Software to Monitor Critical Functions & Provide Complete System Control
- Complete String Test of Package
- Cartridge Tandem/Double Mechanical Seals

### Additional Services

- Nationwide Service Network
- Installation & Supervision
- Turn-Key Projects
- Equipment Leasing Program
- Extended Equipment Warranties

# Engine Driven Pumping System



FLOW RATE (GPM)	PRESSURE (PSI)	LENGTH - X	WIDTH - Y	HEIGHT - Z	WEIGHT (LBS.)
150	2,500	20'	11'	14'	15,000
300	2,500	35'	11'	14'	25,000
500	1,250	35'	11'	14'	35,000
1,000	1,250	40'	11'	14'	45,000
1,600	1,250	45'	12'	16'	55,000